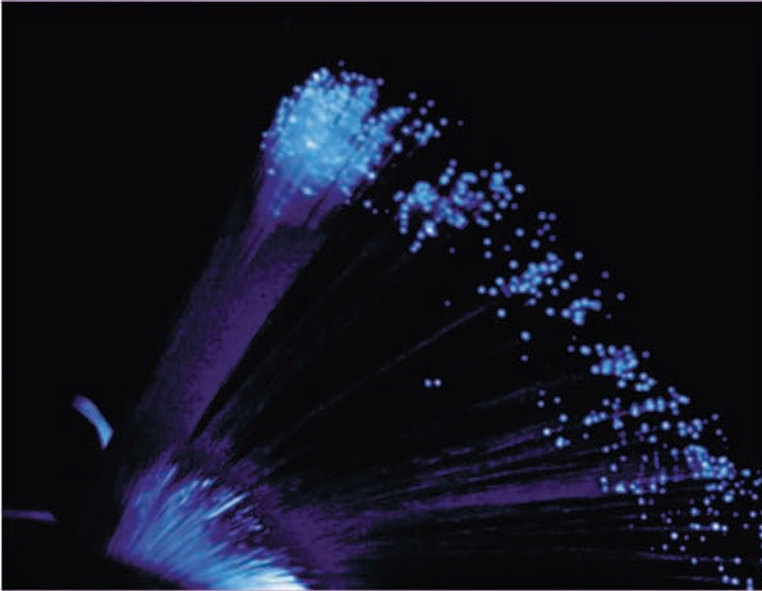


# Partners in Fiberoptics



## Solutions in fiberoptics:

- design & layout of FO modules
- fabrication of FO components & modules

## Solutions in mechanics:

- design & layout of module packages (non-hermetic)
- assembly of fiberoptics and electronics

## Solutions in control and driver electronics:

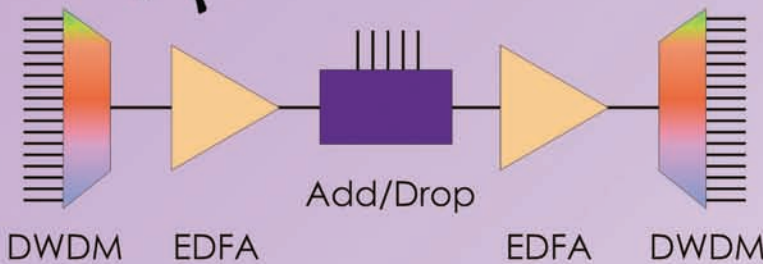
- design & layout of analog and digital electronics
- fabrication of PCBs

Get



# FIBOTEC

## Solutions



## Examples:

- components for CWDM- and DWDM-applications
- FO interferometers
- FO sensors (Bragg)
- customized standard products

... or just outsourcing



# FIBOTEC

[www.fibotec.com](http://www.fibotec.com)

Fibotec Fiberoptics GmbH  
Herpfer Strasse 40  
98617 Meiningen  
Germany

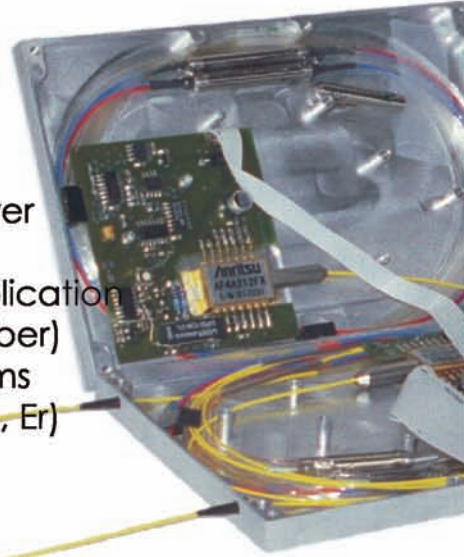
phone +49 (0)3693-8813-20  
fax +49 (0)3693-8813-29

## Solutions in fiberoptics:

### e.g. Customized doped fiber products

- special EDFAs e.g. 2-stage modules with power supply and mid-stage access
- gain profile optimization acc. to specific application
- up to 23 dBm output power (core pumped fiber)
- high power cw (> 500 mW) and pulsed systems based on cladding pumped doped fiber (Yb, Er)

### e.g. 1 $\mu\text{m}$ ASE-source, Yb based

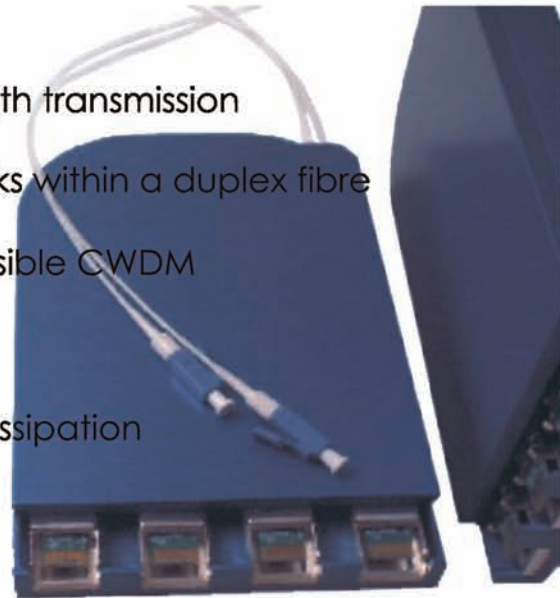


## Solutions in mechanics

### e.g. CWDM-transceiver modules

for Gigabit-rate compact multi-wavelength transmission

- up to 4 bi-directional 2.5 GBit/s data links within a duplex fibre
- flexible multi-rate transceiver
- uncooled DFB laser transmitter at 8 possible CWDM wavelengths
- very compact size (metal enclosure)
- built-in digital diagnostics functions
- single 3.3 V power supply, low power dissipation
- **pluggable, SFP-compliant PCB mount**



## Solutions in control and driver electronics:

### e.g. 10 MBit/s modulated 15+ W laserdiode source

- TTL/CMOS digital modulation input
- analog or digital power control
- 810 nm / 920 nm / 980 nm wavelength
- **high brightness, divergence < 175 mm mrad**

